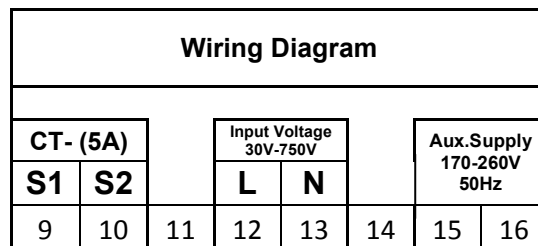




Technical Specification: SINGLE PHASE VIF METER

Model	TMCB-022
Display Parameters & Range	<u>Parameters</u> <u>Range</u>
	Voltage 25V – 300V
	Current 10% - 120% of CTR
	Frequency 45Hz – 55Hz
Features	<ul style="list-style-type: none"> • True RMS Measurement • CT Ratio Programming (Range: 5/5 to 9000/5) • Auto scrolling & Manual mode selectable • Auto decimal shifting for current (from 0.01A to 1A) • Bright Seven segment LED display for better readability
Accuracy	Class 1.0
Display	Three Line Seven Segment display, Size 0.56"
CT Selection	Programmable through KeyPad
Connection	1-phase, 2 wire
Aux. Supply	170V – 270Vac, 50Hz
Dimension	96mm(H) x 96mm(W) x 75mm(D)
Weight	

Connection Diagram:



Operation Manual:

1. Press **(A/M)** key to select *Manual Mode* or *Auto Mode*. *Auto* LED indicates *Auto Mode*.
2. In *Auto Mode*, Voltage, Current and Frequency is displayed sequentially for 20 sec.
3. In *Manual Mode*, repeatedly press **(↑)** key till the required mode is displayed.
4. To check the value of CT ratio programmed in the meter, press **(Prog)** key. The meter will display its programmed value. The factory setting value for CTR is **0 1 0 0** (i.e. 100/5)
5. To change the CT ratio, continuously press **(Prog)** key for 10 seconds. The CT ratio value starts blinking. Use **(↑)** and **(↓)** key to increase or decrease the CT ratio. Press **(Prog)** key for 10 seconds to save the new CT ratio & exit to normal mode.

